

# CLEMENT KAMENA

## JARS ON THE SHELF



CK "Koons 1P" 2014  
[ref.blue diamond]

29 ½ x 18 ¼ in. 75 x 45cm

**Serge Clement**  
**Marina Kamena**

# CONSERVATION

The likelihood that a work by Diego Velasquez and another one by Andy Warhol should materialize in the same object (a jar) would seem highly remote.

The reasons for bringing the works together are neither urgent nor necessary unless the playful mixing of these foundational elements strikes a part of wit, and the spirit of play, as volatile and decisive as a dab of watercolor. The appearance of a word can occasion laughter if it brings together the Wedding at Cana and the peas.

The word we have chosen is "CONSERVATION" because the term suggests both the museum case and the grocery store shelf. The gap between word and image is so quickly crossed that it becomes evidence itself.

Depicting words - jar, conservation, painting, through the language of illusion, becomes our chosen task. We become curators ourselves. Actors came to us from Fayum and Long Island in the 1950s. Their history is not linear, the archives crowd against each other in these transparent cells, and the displays are painted with the care that this anthology requires.

The selection of works may not be exhaustive, but it allows a newly born star to enter in proximity with a star that has long shined in a gallery of the Uffizi or the Louvre.

An astrophysicist has posted that the theses, articles, and bulletins presently held in esteem by the scientific community, the chance for most of being judged lasting by an observer from the future is the same as that of a typographer throwing his tray of type into the air and having it fall so as to spell out a tragedy by Shakespeare.

Far from our minds to assume the future. Each painting thus depicted is not a pastiche of the original work but our perception of its appearance through reproductions. It is a visual experience of its cultural radiance.

Our work starts with the placement of the painting. In its jar, and the placement of the jar in its space at a distance from those that have already been made. The references are drawn from every period, from prehistory to contemporary times.

The acceleration of art history is now part of the history itself. Works made twenty years ago or less are today enveloped in historical analysis and museum protocol, crystallized in conservation measures.

Reduced to the dimension of a glass cylinder, frescoes, paintings, and details acquire a new scale in representation: that the eye of the spectator grants it. It is a poetic dimension and a neutralization. Each painting in its jar, linked to all the others enters the universal time.

With a lid screwed on a glass cylinder, they may sit on the shelf and become a product for the consumer.

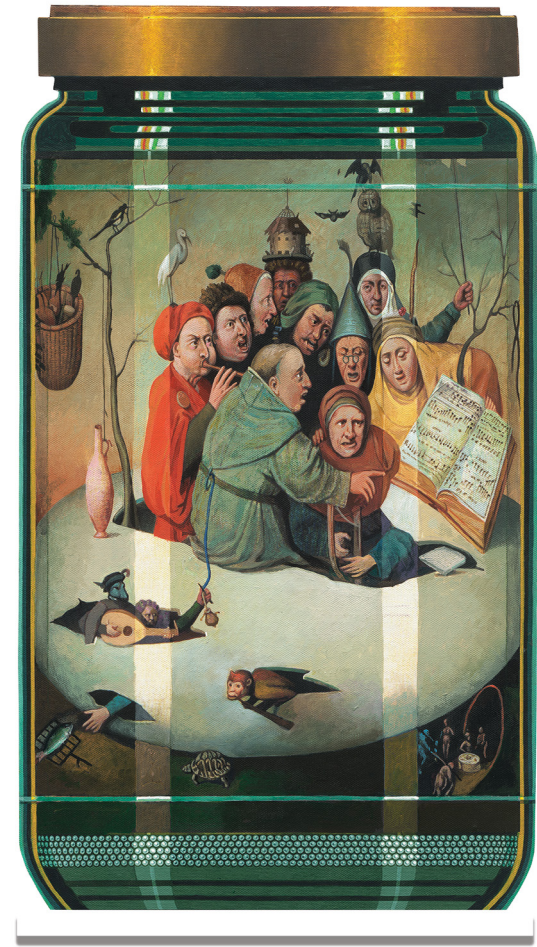
In this maze, an empty jar awaits the appearance of a virtual work that has not yet materialized or displays the absence of a work that has not yet seen the light of day.

***Serge Clement et Marina Kamena***



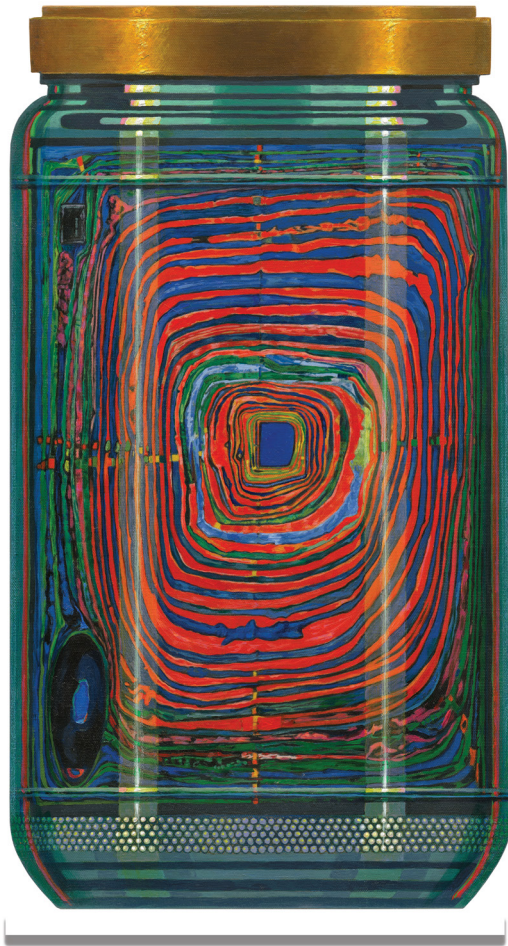
CK "Lichsteinstein 4P" 2014  
[ref. The Melody]

29 ½ x 18 ¼ in. 75 x 45cm



CK "Bosch 1P" 2017  
[ref. Concert in the Egg]

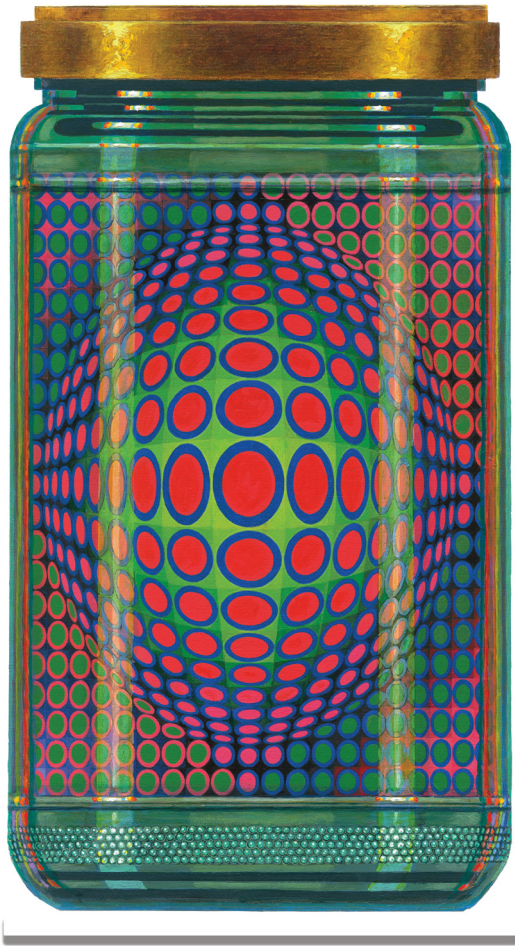
29 ½ x 18 ¼ in. 75 x 45cm



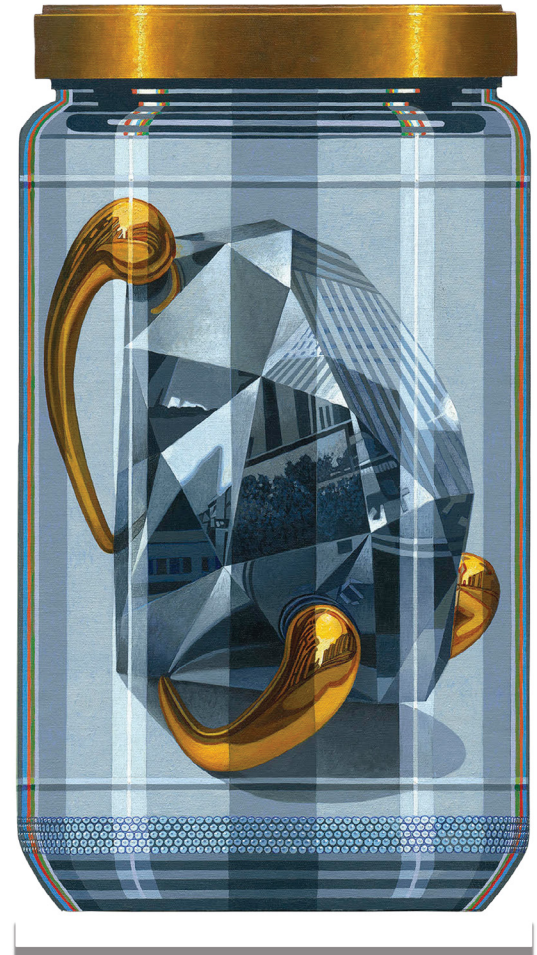
CK "Hundertwasser 1P" 2013  
[ref. Le Grand Chemin ]  
29 ½ x 18 ¼ in. 75 x 45cm



CK "Bruegel the Elder 1P" 2013-17  
[ref. Babel Tower]  
29 ½ x 18 ¼ in. 75 x 45cm



CK "Vasarely 2P" 2013  
[ref. "Vega 200"]  
29 ½ x 18 ¼ in. 75 x 45cm



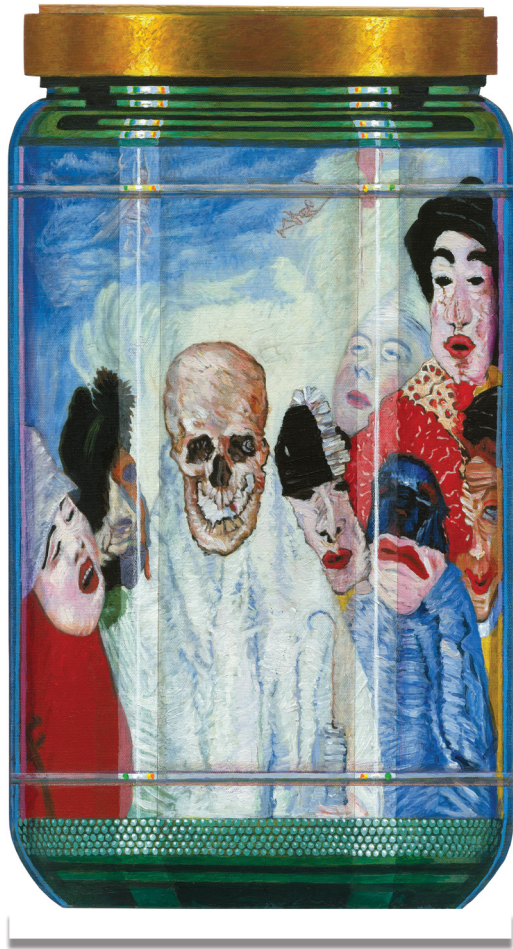
CK "Koons Pseudo" 2017  
Grey Diamond"  
29 ½ x 18 ¼ in. 75 x 45cm



CK "Koons 5P" 2016  
[ref.green diamond]  
29 ½ x 18 ¼ in. 75 x 45cm



CK "Koons 4P" 2016  
[ref.red diamond]  
53 x 32 in. 135 x 81.5cm



CK "Ensor 1P" 2013  
[ref. "Death and the masks"]

29 ½ x 18 ¼ in. 75 x 45cm



CK "Thiebaud 1P" 2014  
[ref. Three Machines]

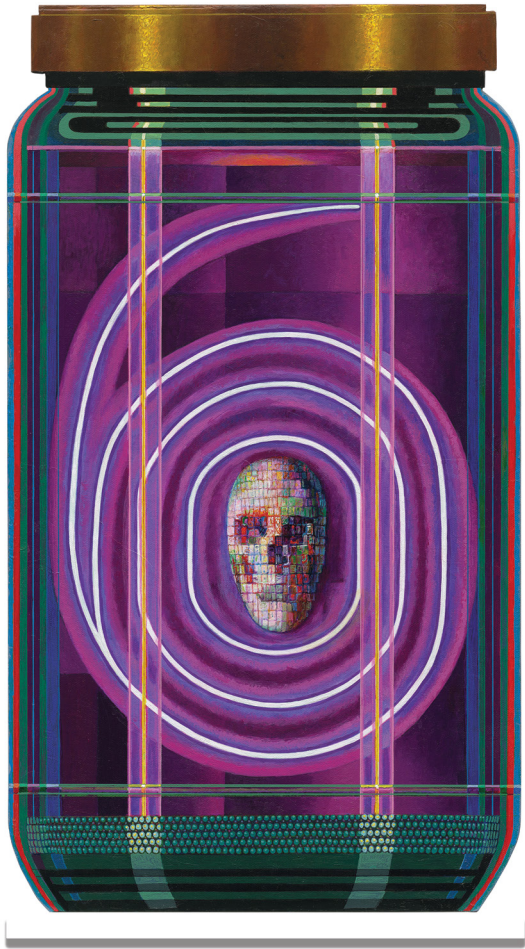
29 ½ x 18 ¼ in. 75 x 45cm



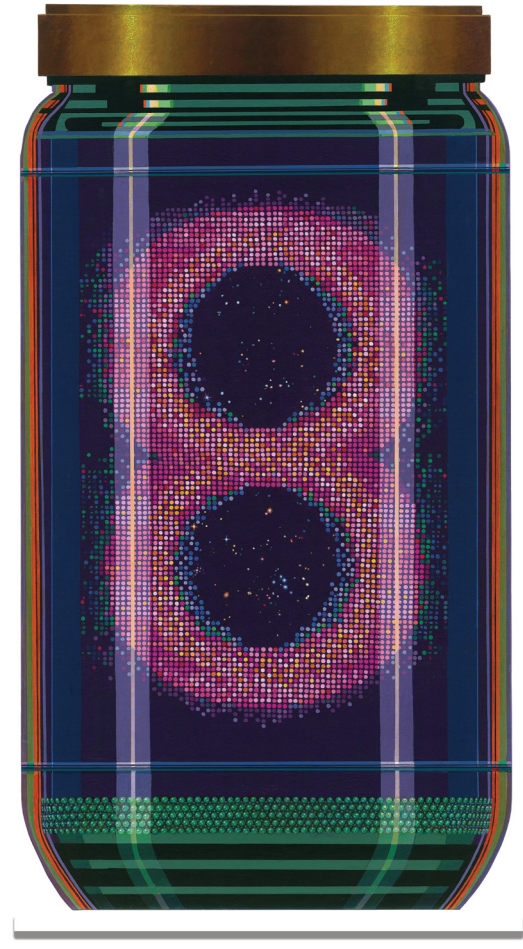
CK "Delphic Sybil 1P" 2015  
29 ½ x 18 ¼ in. 75 x 45cm



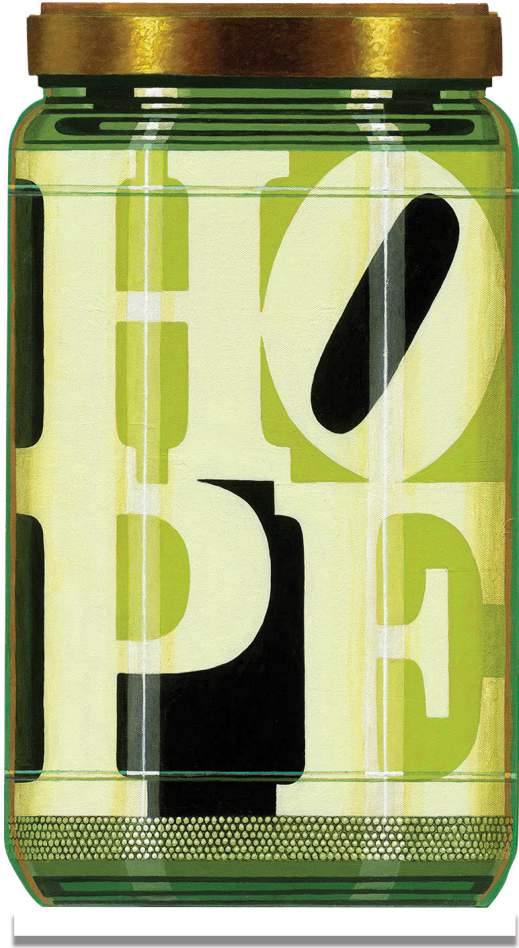
CK "De La Tour 1P" 2015  
[The trickster]  
29 ½ x 18 ¼ in. 75 x 45cm



CK "Number 6, 1P" 2014  
29 ½ x 18 ¼ in. 75 x 45cm



CK "Number 8, 1P" 2015  
29 ½ x 18 ¼ in. 75 x 45cm



CK "Indiana 5P" 2016 [Hope]  
29 ½ x 18 ¼ in. 75 x 45cm



CK "Anonymous Indian 1P" 2014  
[Krishna and Radha]  
29 ½ x 18 ¼ in. 75 x 45cm



CK "Faun 1P" 2016  
29 ½ x 18 ¼ in. 75 x 45cm



CK "FloraSpectrum 1P" 2016  
29 ½ x 18 ¼ in. 75 x 45cm



CK "Keep Calm and Carry on 1P" 2015  
29 ½ x 18 ¼ in. 75 x 45cm



CK "Morris 1P" 2014  
29 ½ x 18 ¼ in. 75 x 45cm



CK "Serebriakova 1P" 2013-2015  
[ ref. Bathers ]  
29 ½ x 18 ¼ in. 75 x 45cm



CK "Zurbarán 1P" 2014  
[ ref. Fragment of Elizabeth of Portugal ]  
29 ½ x 18 ¼ in. 75 x 45cm



Andy Warhol "Marilyn" 2016  
29 ½ x 18 ¼ in. 75 x 45cm



CK "Minjun 1P" 2014  
29 ½ x 18 ¼ in. 75 x 45cm



CK CLEMENTKAMENA 2PL  
"Replica, Babel Tower" 2014

53 x 32 in. 135 x 81.5cm



CK "POUSSIN 3PL" 2013  
[ref. Moise sauve des eaux"]

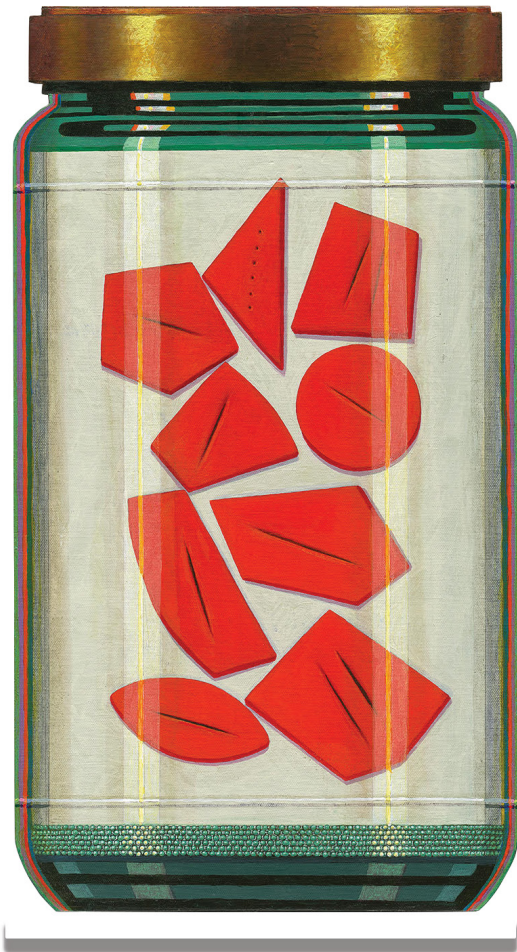
53 x 32 in. 135 x 81.5cm



CK "EDWARD HOPPER 1PL"  
2019 People in the Sun  
53 x 32 in. 135 x 81.5cm



CK "MAGRITTE 1PL" 2020  
[The Lovers]  
53 x 32 in. 135 x 81.5cm



CK "Fontana 1P" 2014  
[ref.Quanta 1960]  
29 x 18 in. 75 x 45cm

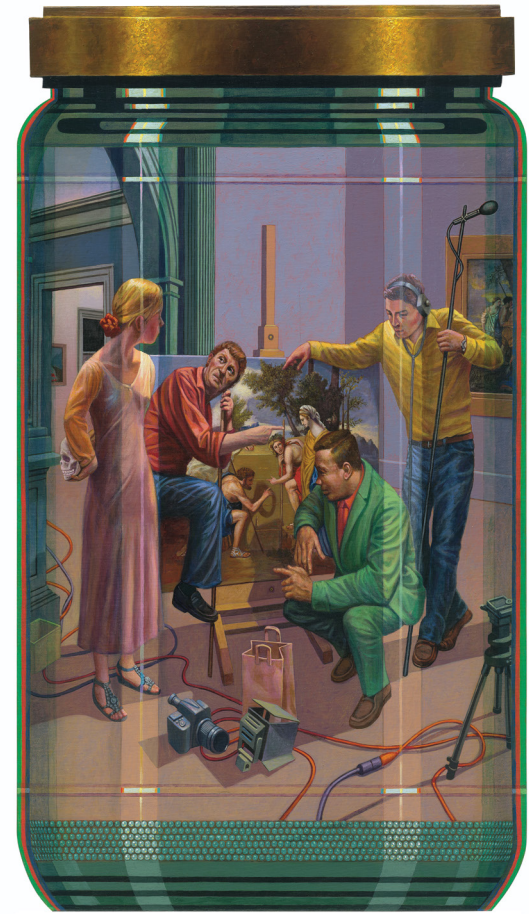


CK "MINJUN 1PL" 2013  
[Outside, inside the stage, fragment]  
53 x 32 in. 135 x 81.5cm



CK "Francis Bacon 1P" 2013  
[ref.Studies for human body]

53 x 32 in. 135 x 81.5cm



CK CLEMENTKAMENA 2PL  
Et in Arcadia... .2014

53 x 32 in. 135 x 81.5cm



CK