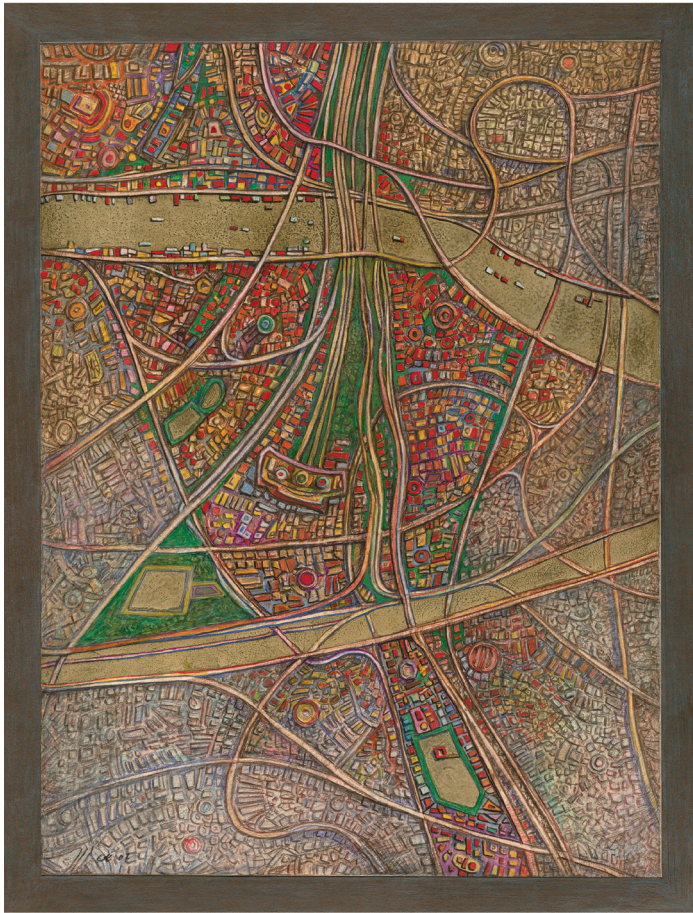
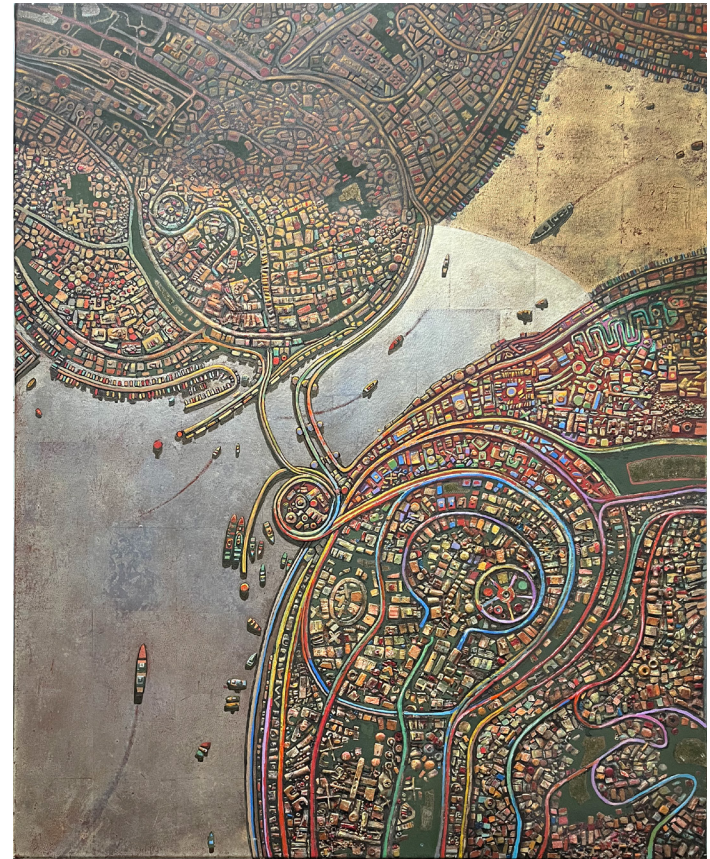




Serge Clement
Marina Kamena



CK "Citi Map".
acrylic on board

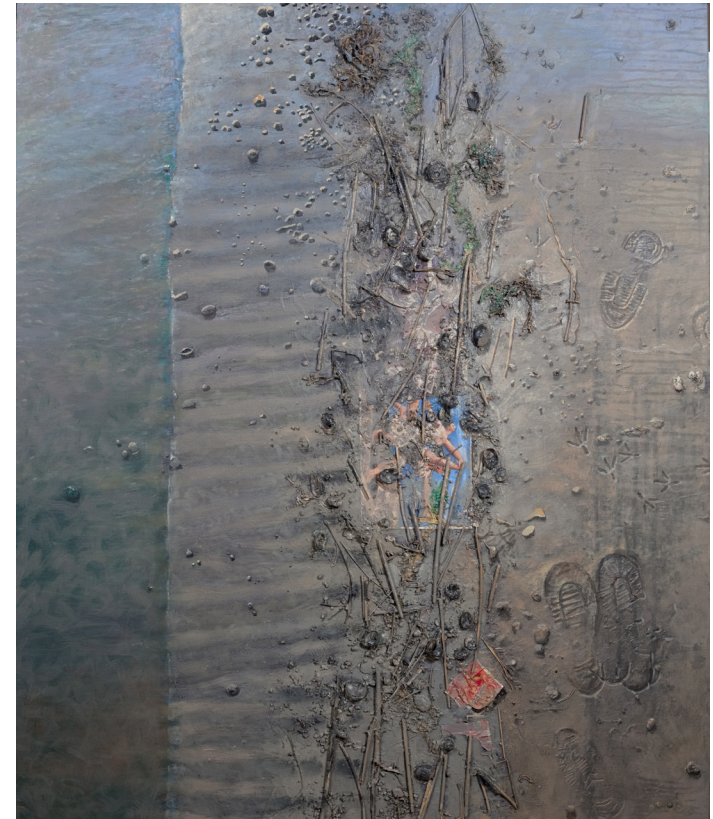


CK "TWO CONTINENTS". 2009
Waterfront on canvas, acrylic and gold leaf,
32" x 26" in, 81.3 x 66 cm



CK "BEACH 1". 2008

mixed medias on wood, 60"x 46", 152.4 x "116.8 cm



CK "BEACH 3, PABLO AT COMPO". 2009

mixed medias on wood, 66 ¼"x 48", 168.3 x 122 cm



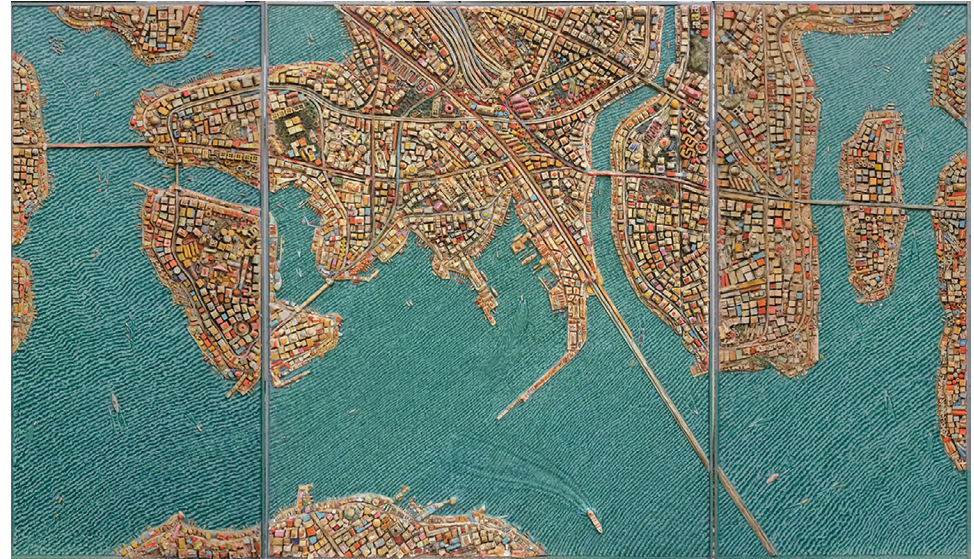
CK "WOODEN CITY". 2004
acrylic and mixed medias on wood
42" x 32", - 107 x 81.5 cm



CK "CONSTELLATION". 2004
acrylic and mixed medias on wood 48"x 40",
122 x 102 cm



CK "PENINSULA". 2005
acrylic and mixed medias on wood, 40" x 32',
- 101.5 x 81.3 cm



CK "WATERFRONT TRIPTYCH". 2007
acrylic and mixed medias on wood, 44" x 78",
-112 x 198.25 cm



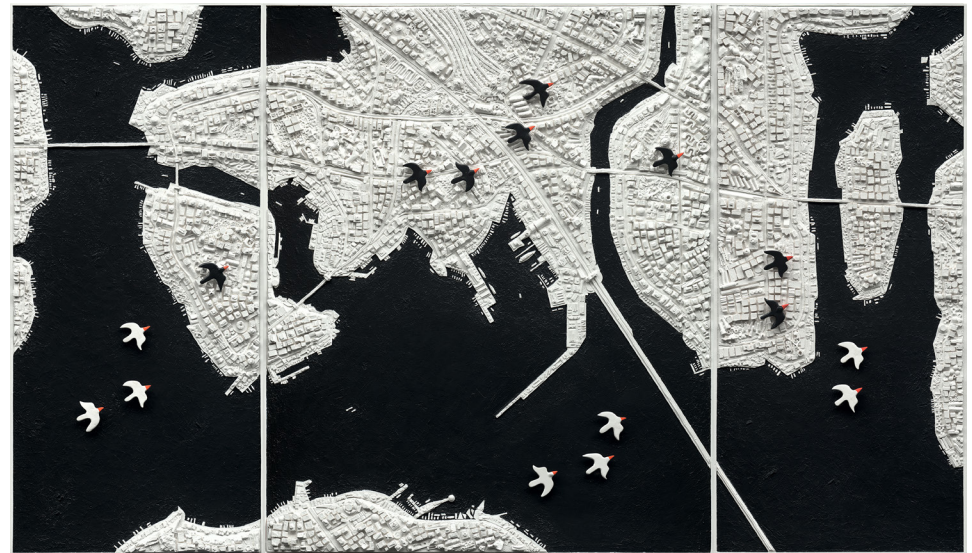
CK "Study for Liberty and the Flame".
2009
watercolor, ink, acrylic on board, 16"x 10 3/4",
41.1 x 27.2 cm



CK "THE FLAME". 2018
acrylic, balsa and gold leaf on canvas
58" x 40" in, 147.5 x 101.5 cm



CK "CITY AT NIGHT". 2018
acrylic and mixed medias on wood, 33 ½"x 24",
- 85 x 61 cm



CK "MIGRATION Triptych". 2017
mixed medias on resin, 44" x 78" in,
- 114.5 x 198 cm,



CK "MIGRATING BIRDS". 2017

mixed medias on wood

BOXES STUDIOLOS



CK "Friedrich Window".
mixed medias, 19"x 19" x3", 48.2 x 4 8.2 x7.6 cm



CK "The Oracle". 2021
mixed medias, 18 1/2" x 15 3/4" x3", 47 x 40 x 7.6 cm



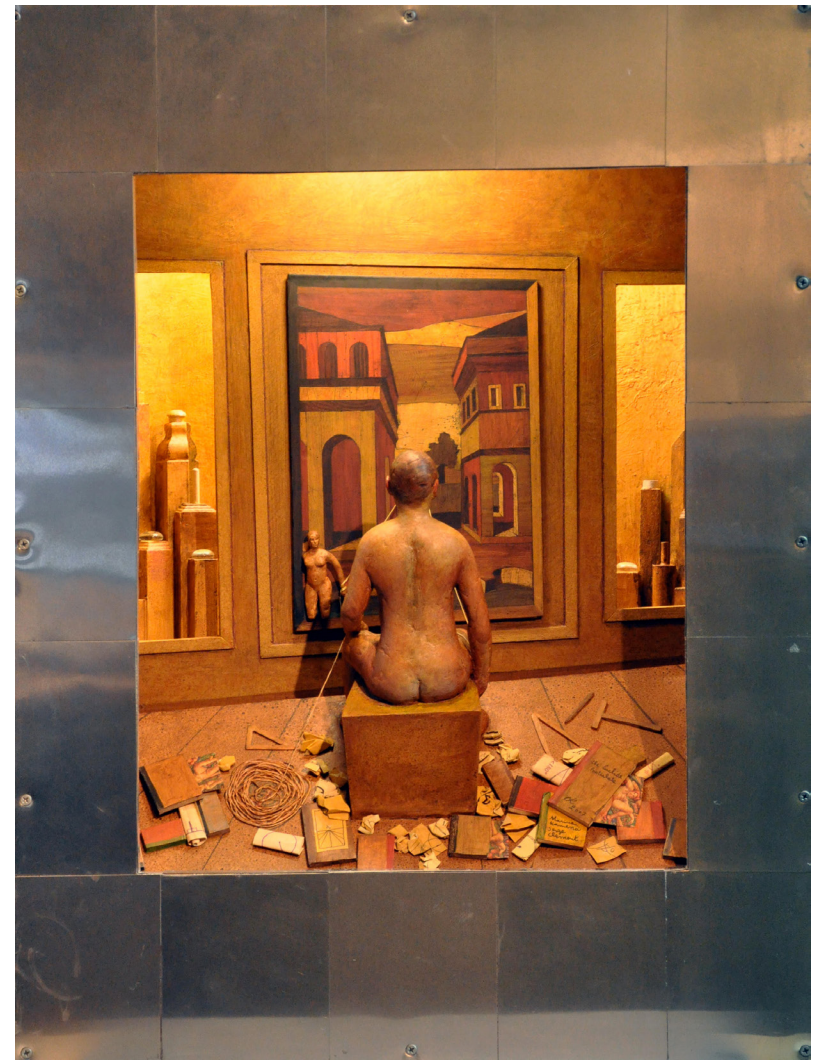
CK "A WONDERFUL DAY". 1999
mixed medias, 24" x 31 1/2" x 9 3/4", 61 x 80 x 24.8 cm



CK "PROMETHEUS". 1988
mixed medias, 23 1/2" x 27 1/2" x 7 1/2",
59.7 x 70 x 19 cm



CK "EUROPA". 1998
mixed medias, 25 1/2" x 27 1/2" x 8",
64.8 x 27.5 x 20.3 cm



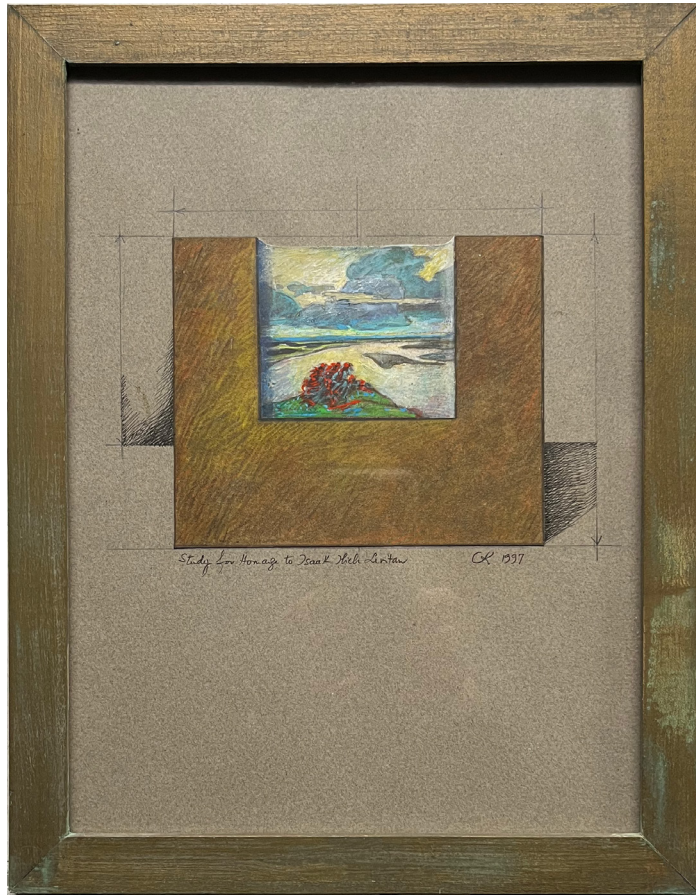
CK "EUCLID". 2002
mixed medias, 31 1/8" x 24" x 11",
80.4 x 61 x 28.3 cm



CK "LES TITANIDES". 1998
mixed medias, 25 ½" x 27 ½" x 8 ½" in.
65 x70 x 21.5cm



CK "RAINFALL". 1998
mixed medias, 15"x 15"x 5", 38 x 38 x 13cm



Study for Homage to Isaac Levitan CK. 1997

"Homage to Isaac Levitan". 1997

pencil, ink, watercolor on light brown Canson paper,

12 3/8" x 10 1/2" : 34 x 26.6 cm



Study for Homage to Morandi CK. 1997

"Homage to Morandi". 1997

pencil, ink, watercolor on light brown Canson paper,

12 3/8" x 10 1/2" : 34 x 26.6 cm



“Homage to Poussin”. 1997

pencil, ink, watercolor on light brown Canson paper,

12 3/8” x 10 1/2” : 34 x 26.6 cm



“Homage to Nicolas Poussin”. 1997

pencil, ink, watercolor on light brown Canson paper,

12 3/8” x 10 1/2” : 34 x 26.6 cm



"Homage to Rubens". 1997

pencil, ink, watercolor on light brown Canson paper,

12 3/8" x 10 1/2" : 34 x 26.6 cm



"Homage to Cotman". 1993

pencil, ink, watercolor on light brown Canson paper,

12 3/8" x 10 1/2" : 34 x 26.6 cm



"Homage to Segantini". 1997

pencil, ink, watercolor on light brown Canson paper,
12 3/8" x 10 1/2" : 34 x 26.6 cm



"Homage to Corot". 1997

pencil, ink, watercolor on light brown Canson paper,
12 3/8" x 10 1/2" : 34 x 26.6 cm



"Homage to Nolde". 1997

pencil, ink, watercolor on light brown Canson paper,

12 3/8" x 10 1/2" : 34 x 26.6 cm



"Homage to Mantegna". 1997

pencil, ink, watercolor on light brown Canson paper,

12 3/8" x 10 1/2" : 34 x 26.6 cm



“Sherwood Island”. 1998

pencil, ink, watercolor on light brown Canson paper,

12 3/8” x 10 1/2” : 34 x 26.6 cm

