



ACP210

# EXTREME CONDITIONS

A / C R E C H A R G E



PREMIUM FORMULA

\*NPD 2016

- GUARDS AGAINST EXTREME TEMPERATURES
- PROTECTS AGAINST HIGH USE
- RESTORES MAXIMUM, COLD, DRY AIR
- SEALS LEAKS
- HYBRID/ELECTRIC COMPATIBLE

**WARNING! CONTENTS UNDER PRESSURE. MAY BE HARMFUL IF SWALLOWED.**

Carefully read precautions on rear panel

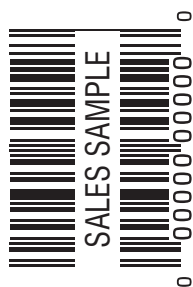
NET WT 12 OZ (340 g)

**WARNING:** Contains 1,1,1,2-tetrafluoroethane (811-97-2) and proprietary additive. **KEEP OUT OF REACH OF CHILDREN. DO NOT STORE CAN IN VEHICLE (MAY EXPLODE).** Do not store above 120°F or in direct sunlight. Keep can away from any source of electricity. Do not puncture or incinerate (burn) container. Exposure to skin may cause frostbite. Use only with adequate ventilation. **ALWAYS WEAR PROTECTIVE GLOVES AND EYE WEAR.**

**FIRST AID:** Eye Contact: Flush eyes with warm (not hot) water for several minutes. Get medical attention if symptoms persist. Skin Contact: Flush with warm water. Get medical attention if irritation persists. Inhalation: Move to fresh air. Get medical attention if irritation or other symptoms develop. Ingestion: Call a poison center for advice.

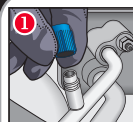
For tech support, call 888-318-5454 or visit [www.acprocold.com](http://www.acprocold.com).

Made in USA for Energizer Auto, Inc., St. Louis, MO. Emergency Tel. 1-800-526-4727



## A/C PRO® EXTREME CONDITIONS A/C RECHARGE PROVIDES:

- PROTECTS AGAINST EXTREME TEMPERATURES AND HIGH USE...** with a robust lubricant ingredient combo specifically designed to withstand high pressures seen with frequent A/C stops and start-ups.
- FORMULA WITH 2X COOLING BOOSTERS...** independently tested to deliver the coldest air from your vehicle's A/C vs. the next leading brand of A/C recharge kits.
- EXCELLENT LEAK SEALING...** Advanced formula works quickly to seal common A/C leaks in rubber O-rings, gaskets, and hoses.



### INSTRUCTIONS:

Always wear protective gloves and glasses.

**1. OPEN HOOD AND FIND LOW PRESSURE A/C SERVICE PORT:** With engine off, open hood and locate the low pressure A/C service port (on the larger diameter tubing between the compressor and evaporator). Remove the plastic cap from port and save.

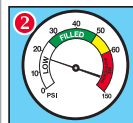
**TIP:** Visit [rechargeac.com](http://rechargeac.com) for additional help in locating your low-pressure service port.

**NOTE:** For best results, charge under shade. Keep the car doors open while charging (front and back). Start car and turn on A/C. Set fan to highest setting and temperature to coldest setting. Make sure recirculation mode is selected. Attach quick-connect fitting on end of recharge hose to low-pressure service port identified earlier by pulling the connector ring back as the fitting is pushed on.

**NOTE:** Our quick-connect fitting will attach only onto the low-pressure port.

**2. READ PRESSURE COLOR:** Without pulling the trigger, look at the gauge to see what color section the needle is pointing toward. Depending on the color, determine next step according to grid below:

COLOR SECTION OF GAUGE	WHAT IT MEANS
LOW	<ul style="list-style-type: none"> <li>System low on refrigerant. Continue to step 3 to begin recharging process.</li> </ul>
FILLED	<ul style="list-style-type: none"> <li>If needle is within the green section, system is properly charged and no additional refrigerant is needed.</li> <li>Malfunctioning A/C when needle within green indicates other system problems besides low refrigerant.</li> </ul>
SEE INSTRUCTIONS	<ul style="list-style-type: none"> <li>No additional refrigerant needed.</li> <li>Confirm compressor clutch is engaged when checking pressure.</li> <li>If compressor is not engaged, ensure car is running and A/C is turned on.</li> <li>If needle is in the red and compressor is cycling on, do not add refrigerant. System needs to be serviced by technician. Other system problems besides low refrigerant may exist. The system needs to be serviced by a certified technician.</li> </ul>



**3. CHARGE SYSTEM:** Disconnect the trigger assembly from service port. Unscrew and remove plastic spacer between trigger assembly and can. Shake can well and screw can onto gauge/trigger assembly. Connect the quick-connect back on the low-side port. Make sure to always hold the can upright (12 o'clock position) before starting to charge. Squeeze the trigger to charge the A/C system. While charging, shake the can up and down, alternating between an upright and sideways position. Every 15 seconds release trigger. After needle is stabilized, check pressure readings on gauge.

**TIP:** Read pressure when trigger is released, not while being squeezed. It is typical for gauge to bounce around as the compressor is cycling. If that happens, read the lowest pressure.

**STOP CHARGING WHEN NEEDLE IS IN GREEN. BE CAREFUL NOT TO OVERCHARGE YOUR SYSTEM. DO NOT LET NEEDLE MAKE IT INTO THE RED AREA.** Once needle makes it anywhere in green zone of the gauge, charging is complete. Do not try to get it to the highest part of the green zone or you risk overcharging. Remove hose from service port and replace plastic cap when finished. Store any unused refrigerant in a cool, dry place, with charging hose securely attached to can.

© 2021 Energizer. A/C Pro is a trademark of Energizer Auto.  
DOT SP 10232 M1119 LB-156 11.19