

ACP-105V



# A/C PRO.

# MAX-SEAL

## PREVENTS METAL LEAKS



**ANTI-CORROSION  
ADDITIVES HELP SHIELD  
AGAINST METAL LEAKS**



**STOPS RUBBER LEAKS  
AND RECONDITIONS SEALS**

**WARNING! CONTENTS UNDER PRESSURE.  
EYE AND SKIN IRRITANT.**

Carefully read precautions on rear panel.

**NET WT 12 OZ (340 g)**

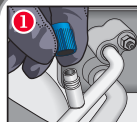
**CONTENTS:** Approximately 10 oz. R-134a Refrigerant, 2 oz. Additives

**WARNING: KEEP OUT OF REACH OF CHILDREN. FIRST AID: SKIN:** Exposure to skin may cause frostbite and irritation. Flush with warm water. **EYE:** Flush eyes with water for 15 minutes. **INHALATION:** Move to fresh air. Get medical attention if irritation or other symptoms persist. Contains 1,1,1,2-tetrafluoroethane (811-97-2) and proprietary elastomer conditioning agent.

**DO NOT STORE CAN IN VEHICLE (MAY EXPLODE).** Do not store above 120°F or in direct sunlight. Keep can away from any source of electricity. Do not puncture or incinerate (burn) container. Use only with adequate ventilation. **ALWAYS WEAR PROTECTIVE GLOVES AND EYEWEAR.** Not for use in hybrid/electric vehicles with non-belt-driven (electric-driven) compressor.

**RESTORES LOST REFRIGERANT & OIL ... quickly brings back cool air and lubricates A/C compressor.  
CONTAINS 2-IN-1 MAX-SEAL CHEMISTRY**

- 1 STOPS LEAKS** by reconditioning rubber O-rings, gaskets and hoses.
- 2 ANTI-CORROSION ADDITIVES** helps protect metal system components against corrosion and corrosion induced leaks.



### INSTRUCTIONS:

*Always wear protective gloves and glasses.*

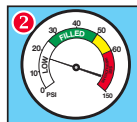
**1. OPEN HOOD AND FIND LOW PRESSURE A/C SERVICE PORT:** With engine off, open hood and locate the low pressure A/C service port (on the larger diameter tubing between the compressor and evaporator). Remove the plastic cap from port and save.

**TIP: Visit [acprocold.com](http://acprocold.com) for additional help in locating your low-pressure service port.**

**NOTE: For best results, charge under shade. Keep the car doors open while charging (front and back).** Start car and turn on A/C. Set fan to highest setting and temperature to coldest setting. Make sure recirculation mode is selected. Attach quick-connect fitting on end of recharge hose to low-pressure service port identified earlier by pulling the connector ring back as the fitting is pushed on.

**NOTE:** Our quick-connect fitting will attach only onto the low-pressure port.

**2. READ PRESSURE COLOR:** Without pulling the trigger, look at the gauge to see what color section the needle is pointing toward. Depending on the color, determine next step according to grid below:



COLOR SECTION OF GAUGE	WHAT IT MEANS
LOW	<ul style="list-style-type: none"> <li>System low on refrigerant. Continue to step 3 to begin recharging process.</li> </ul>
FILLED	<ul style="list-style-type: none"> <li>If needle is within the green section, system is properly charged and no additional refrigerant is needed.</li> <li>Malfunctioning A/C when needle within green indicates other system problems besides low refrigerant.</li> </ul>
SEE INSTRUCTIONS	<ul style="list-style-type: none"> <li>No additional refrigerant needed.</li> <li>Confirm compressor clutch is engaged when checking pressure.</li> <li>If compressor is not engaged, ensure car is running and A/C is turned on.</li> <li>If needle is in the red and compressor is cycling on, do not add refrigerant. System needs to be serviced by technician. Other system problems besides low refrigerant may exist. The system needs to be serviced by a certified technician.</li> </ul>



**3. CHARGE SYSTEM:** Disconnect the trigger assembly from service port. Unscrew and remove plastic spacer between trigger assembly and can. Shake can well and screw can onto gauge/trigger assembly. Connect the quick-connect back on the low-side port. Make sure to always hold the can upright (12 o'clock position) before starting to charge. Squeeze the trigger to charge the A/C system. While charging, shake the can up and down, alternating between an upright and sideways position. Every 15 seconds release trigger. After needle is stabilized, check pressure readings on gauge.

**TIP: Read pressure when trigger is released, not while being squeezed.** It is typical for gauge to bounce around as the compressor is cycling. If that happens, read the lowest pressure.

**STOP CHARGING WHEN NEEDLE IS IN GREEN. BE CAREFUL NOT TO OVERCHARGE YOUR SYSTEM. DO NOT LET NEEDLE MAKE IT INTO THE RED AREA.** Once needle makes it anywhere in green zone of the gauge, charging is complete. Do not try to get it to the highest part of the green zone or you risk overcharging. Remove hose from service port and replace plastic cap when finished. Store any unused refrigerant in a cool, dry place, with charging hose securely attached to can.



SALES SAMPLE



Made in USA for Energizer Auto, Inc., St. Louis, MO

©2020 Energizer. A/C Pro is a trademark of Energizer Auto

For tech support, call 888-318-5454 or visit [ACPROCOLD.com](http://ACPROCOLD.com) DOT SP 10232 M1119 LB-125C 5.20